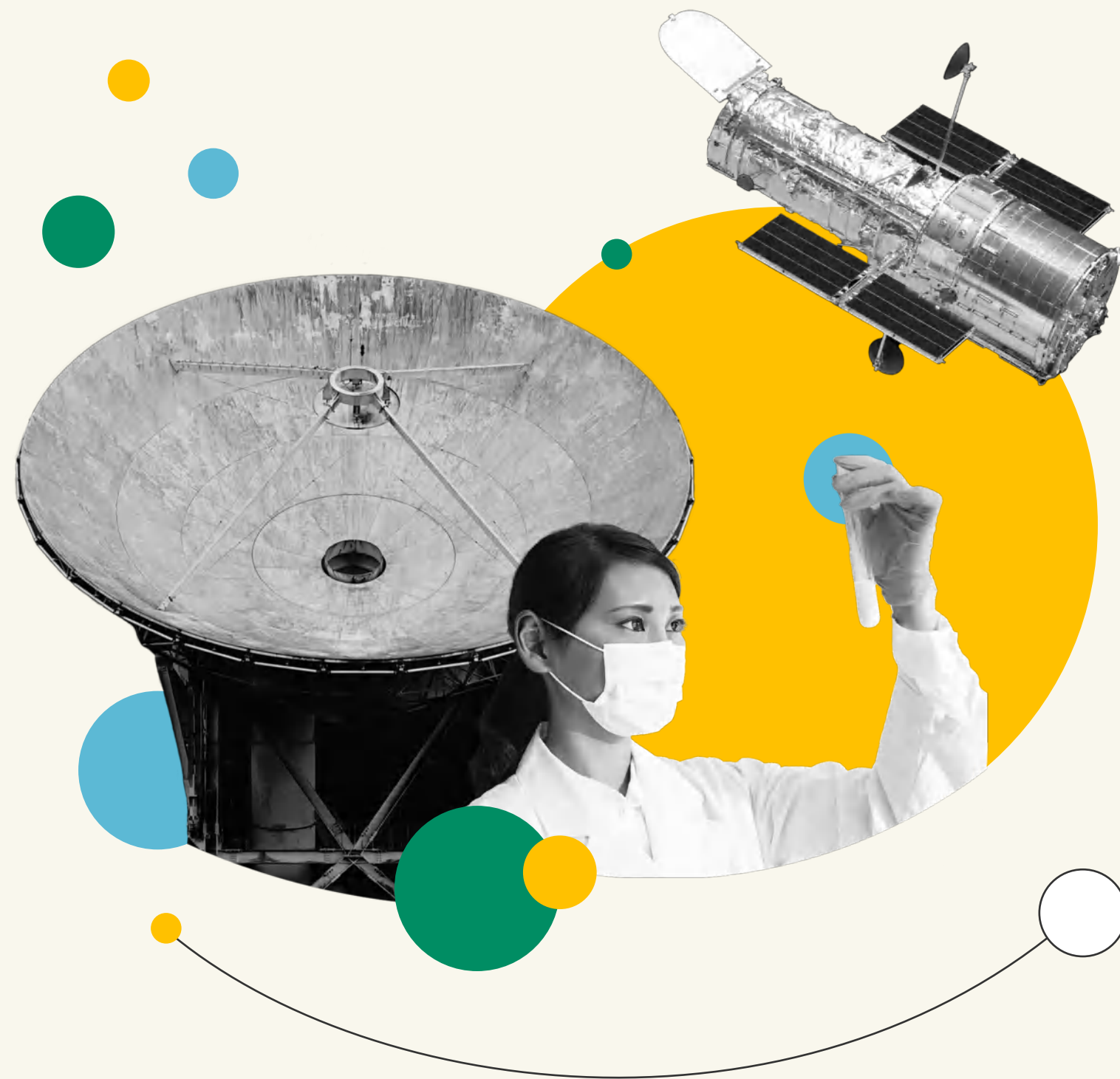


# How can you contribute to make our vision a reality



## Data provider

→ **Expose** and maintain key spatial datasets as Open Geospatial Consortium services using networked infrastructure hosted independently, through the U.N. Global Platform, or through other networks explicitly designed for semantic interoperability.

→ **Plan** for data compatibility using open, widely available standards and ensuring that associated metadata are complete, correct, and semantically meaningful.

→ **Host** tabular data in machine accessible formats.

## Modeller

→ **Adopt** design principles and guidelines for independently produced, interoperable model projects using distributed version control software.

→ **Scope** projects carefully to bring models from experimental/locally hosted, to public/globally available.



## Hosting institution

→ **Become** a hosting member of one of the multiple nodes of the k.LAB peer-to-peer system. You will contribute to a more stable, flexible and powerful network by having full ownership and control of critical data and models that are not meant to be shared with the wider community.

### Are you one of them?

Contact us at [info@integratedmodelling.org](mailto:info@integratedmodelling.org) to learn more about how you can be part of the ARIES vision to support a more open, integrated, and democratic science, and join us in this journey.